



HEARTWOOD
HOMES

Wellington Road, St. Albans, AL1 5NL

Offers Over £950,000

🛏️ 4 🚿 2 🚪 2



A stylish four double bedroom semi-detached family home which has been thoughtfully modernised and extended to provide a magnificent open plan living space!

This lovely home is situated in a sought after residential location only a short distance from the main line station with direct access to London via St Pancras International. You are also perfectly located close to popular schooling and a wide variety of local shops, eateries and leisure facilities.

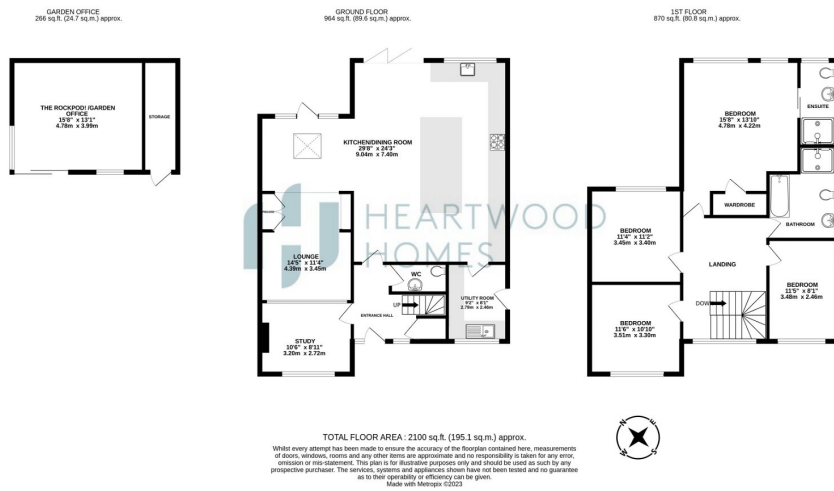
The accommodation begins with a welcoming entrance hall with a ground floor W.C on your right, a study to your left and to the rear is a bright, contemporary open plan kitchen/dining/family room with bifold doors opening directly to the garden. The kitchen has been brilliantly designed creating the bespoke kitchen of your dreams, ideal for the gourmet cooks and to host amazing family gatherings. Furthermore, there is a lovely snug area for relaxing and a useful utility room.

The first floor has a wonderful galleried landing with luxury oversized doors to all rooms. To the rear is a stunning master suite complete with walk in wardrobe and an ensuite. there are three further generous double bedrooms and an attractive family bathroom.

Externally to the front you have a well groomed front garden with a paved area providing off street parking and gated side access to the rear garden. The rear garden has been carefully landscaped with a large patio area ideal for entertaining and to the rear is an awesome garden room 'The Rockpod' which offers versatility and ample storage space.

Call us today to arrange your appointment to view this spectacular home and avoid missing out. EPC Grade C





- Chain free
- Contemporary and versatile open plan kitchen/dining/family room
- Four well proportioned bedrooms
- Attractive bathroom and ensuite
- Study
- Utility room
- Amazing garden room 'The Rockpod'
- Off street parking

